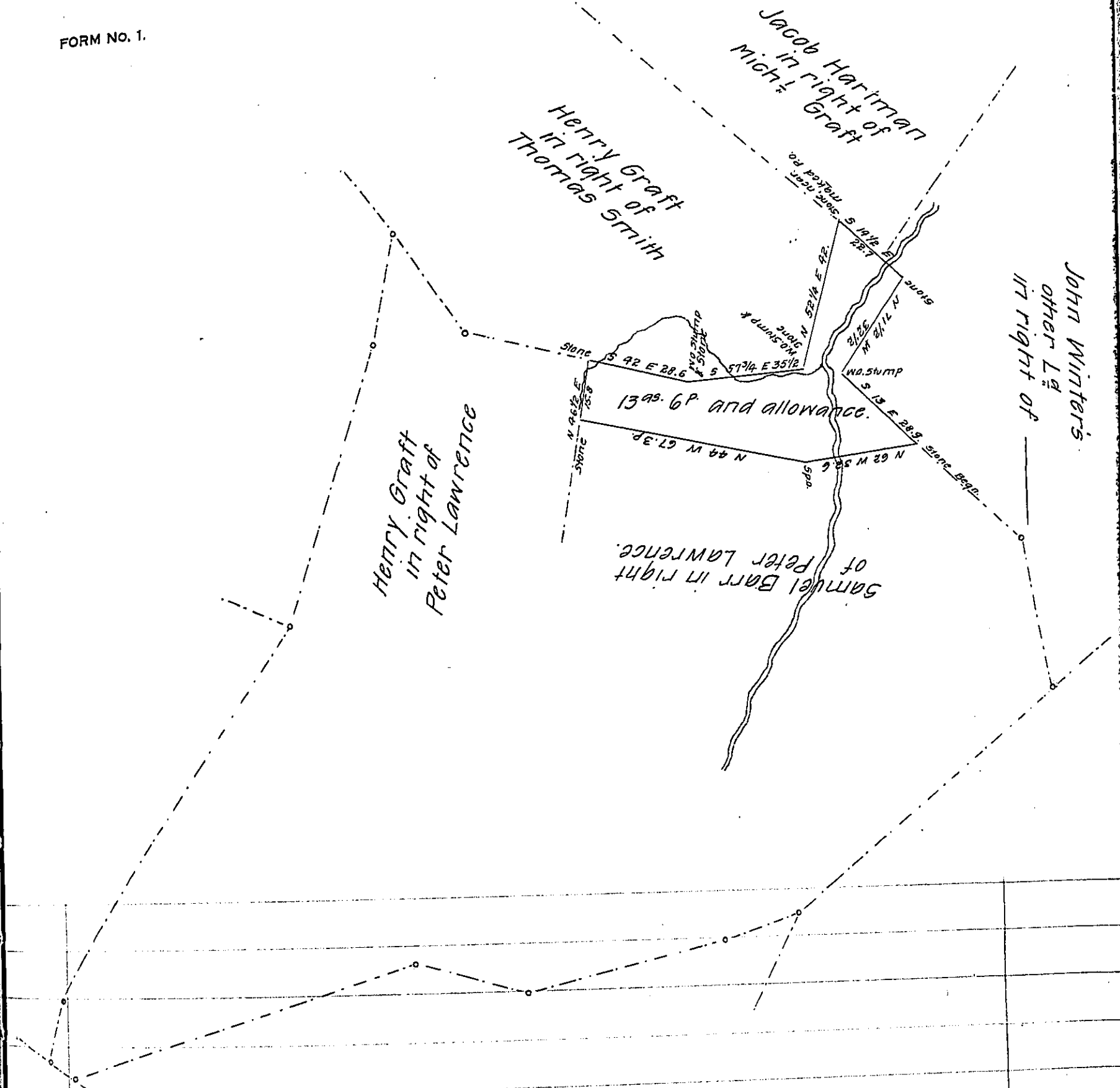


FORM No. 1.



Draught of a piece of Land, situate in Martick township Lancaster County, containing thirteen acres six perches & the allowance of 6 p. cent & ca. Being part of a larger tract, granted to Peter Lawrence, by warrant dated 21st December 1750 and cont^g, by original survey; 210 as. & the usual allowance.

Surveyed the above described piece of Land, for John Winters May 29th 1821.

To Samuel Cochran Esqr. } P. James Black D.S.
 Surveyor Gen^l }

IN TESTIMONY that the above is a copy of the original remaining on file in the Department of Internal Affairs of Pennsylvania, made conformably to an Act of Assembly approved the 16th day of February 1833, I have hereunto set my hand and caused the Seal of said Department to be affixed at Harrisburg, this third day of January 1908

Henry Hoover
 Secretary of Internal Affairs.